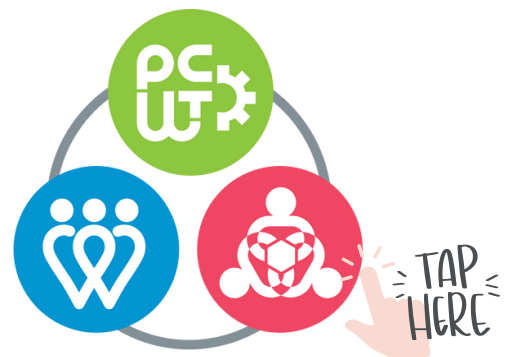


# Autism Changes Update



Working together for SEND families

## Position statement

## Needs led survey

01



### Feedback from parent carers

313 families provided feedback on the autism referral changes via [our survey](#) which is open until after Easter

02



### Data analysis and sharing

We received 616 questions and responses. We shared your views with the Integrated Care Board (ICB) on March 16th and asked them what support will be available for families

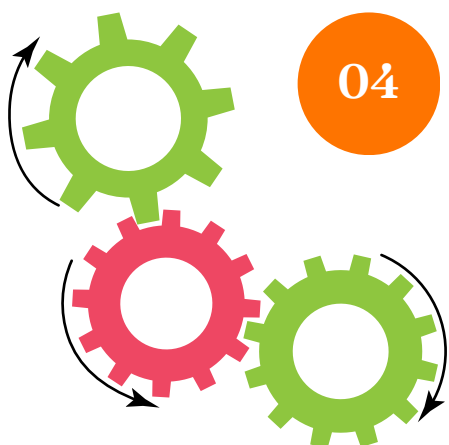
03



### Your views

Our goal is to ensure that local services meet the needs of local families. Families passionately believe that support and diagnosis should happen in tandem

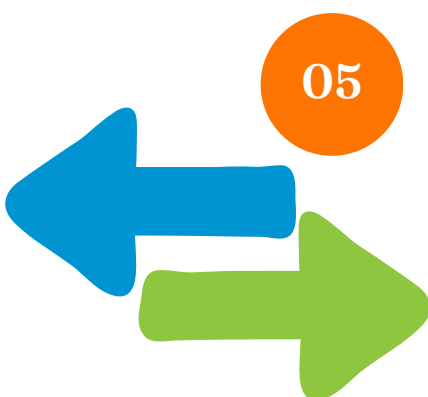
04



### Working together

Moving forward we have offered our help to work with the ICB to create services that support the views and needs of our families

05



### Next steps

While we wait for a response from the ICB check out the links on our websites. We all continue to offer support with no diagnosis needed